

INTERNATIONAL UNDERGRADUATE TRACK

Established in 1971, Industrial Engineering at ITB is the oldest and the first Internationally accredited (IABEE) industrial engineering education institution in Indonesia.

International Undergraduate Program was established in 2022 to ensure the competitiveness of our graduates in the increasingly global engineering job market. The track has the same quality of education with the regular class in ITB's Ganesha campus with mandatory international exposure for at least one semester.



International Track in INDUSTRIAL ENGINEERING — Undergraduate

CONTACT US


INDUSTRIAL ENGINEERING PROGRAM
FACULTY OF INDUSTRIAL TECHNOLOGY
INSTITUT TEKNOLOGI BANDUNG

Gedung Matthias Aroef
Laboratorium Tekniknologi III
Jalan Ganesha 10 Bandung 40132
Phone: +62-22-2504189
WhatsApp: +62-81-990-134-144
Email : ti@itb.ac.id
Web : www.ti.fti.itb.ac.id/en

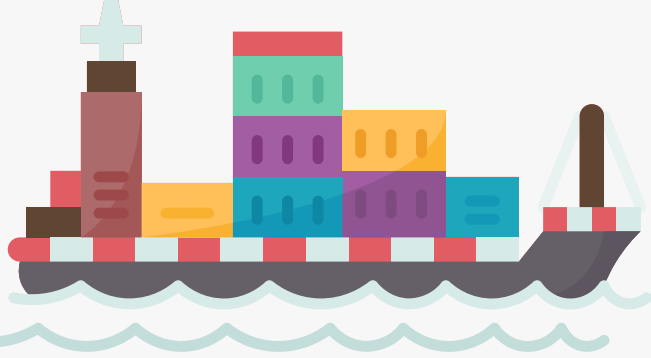
FOLLOW US ON SOCIAL MEDIA

 [@ti.itb](https://www.instagram.com/ti.itb)

 [/ti.itb](https://www.linkedin.com/company/ti.itb)

 [bit.ly/YoutubeTIITB](https://www.youtube.com/channel/UCIITB)

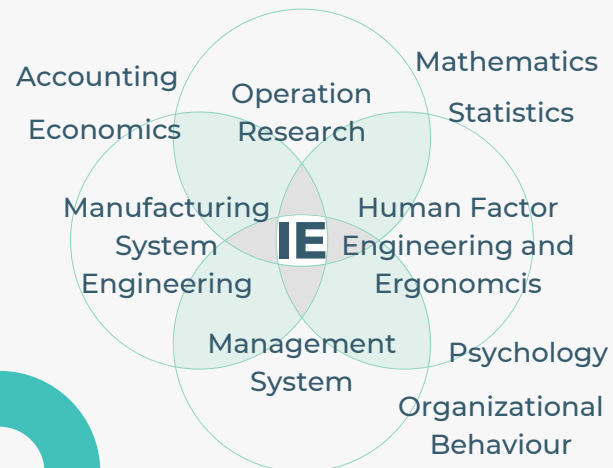




WHAT IS INDUSTRIAL ENGINEERING?

Industrial and systems engineering (ISE) is concerned with the design, improvement and installation of integrated systems of people, materials, information, equipment and energy. It draws upon specialized knowledge and skill in the mathematical, physical, and social sciences together with the principles and methods of engineering analysis and design, to specify, predict, and evaluate the results to be obtained from such systems

BODY OF KNOWLEDGE



CURRICULUM

Year	Course Content
First Year: Fundamentals	Basic science, liberal arts, & principles of general engineering
Second Year: Basic Skill	Fundamentals of industrial engineering methodology
Third Year: Study Program	More advanced industrial engineering subjects
Fourth Year: Final	Capstone project & engineering design

PARTNER UNIVERSITIES



and 100+ partner universities in all around the globe through

- SEA (Semester Exchange Abroad),
- GE3 (Global Engineering Education Exchange),
- IISMA (International Indonesian Students Mobility Award),
- and other internationalization schemes

bit.ly/ITBSemExchange

ADMISSION

The undergraduate track in Industrial Engineering is applicable for both Indonesian and Non-Indonesian passport holders.

Requirement

- English proficiency: TOEFL (min. 61), IELTS (min. 5.5), or ITB ELPT (min. 92)
- International educational qualification certificate, e.g. General SAT or ITB Academic Qualification Test
- High School (or equivalent) report/transcript commending high academic achievement upon graduation

admission.itb.ac.id

CAREER PROSPECTS

- Production Engineer
- Quality Engineer
- Safety Engineer
- Business Development & Analyst
- Data Scientist
- Organization & Human
- Capital Specialist
- Project Manager
- Corporate Planning Specialist
- Consultant
- Marketing System Specialist
- Logistics & Procurement Specialist
- User Experience & Interface Specialist
- Human Factors & Ergonomics Specialist
- Product Developer
- Etc.